



Redesigning
Our Future!

CAMP
STAR
ANGELINA

Discover Universal Play



Imagine...

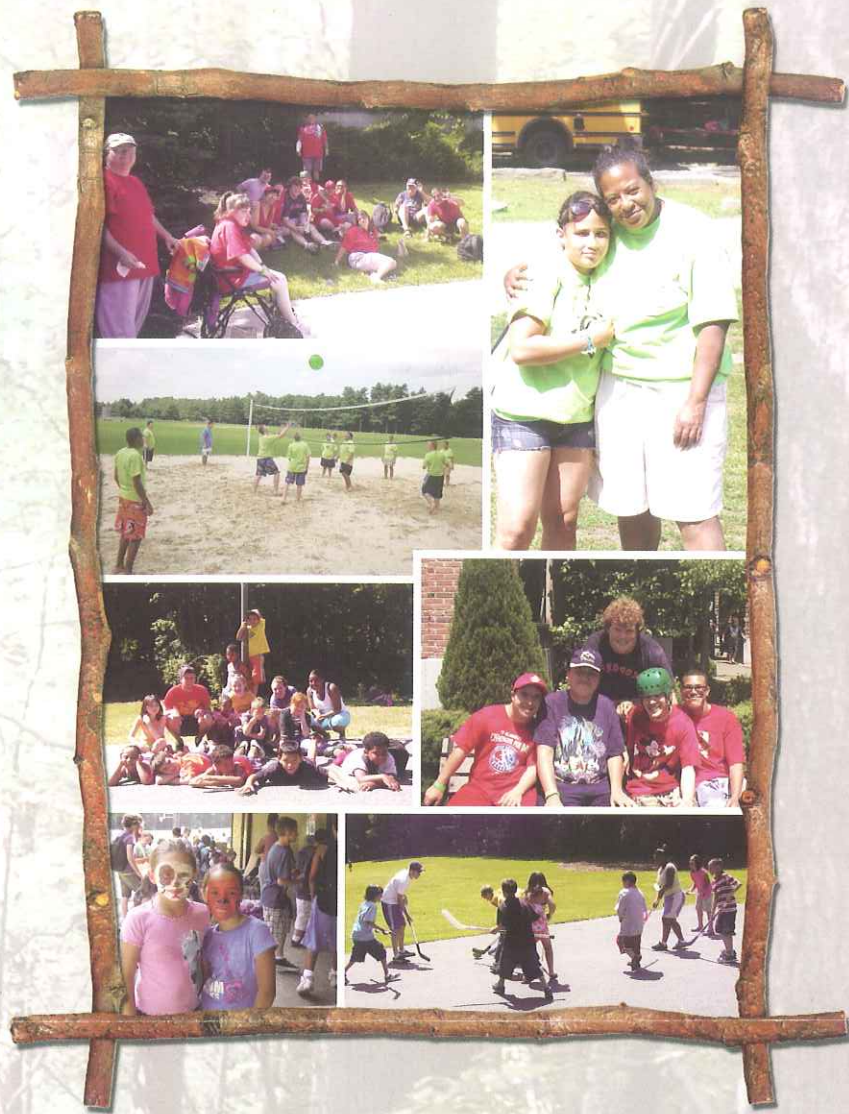
You are a 10-year-old with a developmental disability, a child with cancer who now uses a wheelchair, a young girl with ADHD or a boy with Asthma. Now, envision yourself as a parent or family member of this child.

Where do they play? Where do they make friends with other children who share similar experiences as well as those who do not? Where can they be included and accepted for being themselves, and not seen as just a person with a disability?

Everyone needs a place that is universal and accessible to play, grow and learn. This place is Camp STAR Angelina.



Discover ♦ Universal ♦ Play



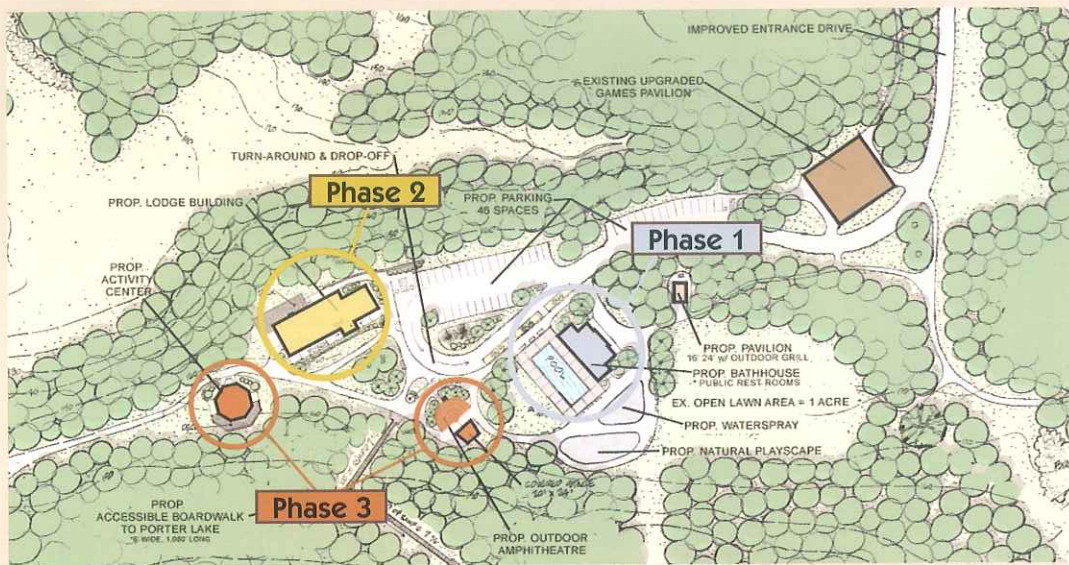
We Need Your Support

Currently the indoor space does not meet the needs of Camp STAR Angelina on rainy days; therefore the campers and staff move to a local high school when there is inclement weather. This limits the camp program on those days. While the grounds are beautiful, some areas and trails are still inaccessible to many of our campers. Lack of access prevents the campers from experiencing the full therapeutic benefits of the natural setting.





Camp STAR Angelina is in need of facility upgrades to enhance program potential for the campers. With the addition of programming space and buildings, as well as maintenance to the trails and grounds, we will be able to offer campers a modernized, *universally designed*, state-of-the-art facility that encourages success for all campers.



What We Need To Rebuild



Detail of Master Site Plan

-  Swimming Pool/Bathhouse/Changing Rooms
-  Administrative Lodge
-  Activity Center
-  Amphitheater

Dear Friend of Camp STAR Angelina:

The Department of Parks, Buildings and Recreation Management (DPBRM), the Springfield Council for Cultural and Community Affairs (SCCCA), and Camp STAR Angelina have partnered together to implement a Master Plan for Capital Improvements that will develop the facilities and increase programming for the hundreds of campers and families we serve each year.

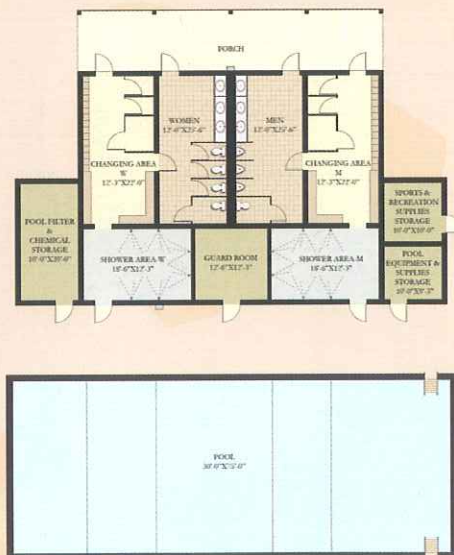
The proposed improvements are necessarily ambitious and proactive in design. The future trend of program and design will no longer be to just meet the minimum requirements of the Americans with Disabilities Act (ADA), but to look toward universal design and access for all. Parents, families and campers will be looking for programs that help teach children about differences, acceptance and respect for all people. The improvements at Camp STAR Angelina will put us ahead of the curve as we intentionally plan and design a facility that will be accessible to all people, regardless of age or ability. In doing so, we will be creating the first Universally Designed day camp and park in Western Massachusetts.

Sincerely,
Domenic J. Sarno, Mayor
City of Springfield, Massachusetts



Pool and Bathhouse Phase 1

- The energy of camp. Swimming is the most popular activity and this new facility will ensure it's accessible to all. The changing room meets the needs of campers ages 3 to 22, and the pool's universal walk-in entry encourages independence and success.
- The Pool and Bathhouse are in a centralized location at camp to increase safety and security.
- The Pool offers enough programming space for swimming and water games.
- Phase 1 will be constructed in Spring 2011, providing a safe, clean and aesthetically improved facility.
- **Funding supported by the following organizations: MassMutual Financial Group, The City of Springfield, The Irene E. & George A. Davis Foundation, The Parents, Friends of Camp STAR, Inc., and The Walker Trust.**



Administration Lodge - Phase 2



- The heart and home of Camp, the Lodge houses the camp and nurse's office, kitchen and conference room with entrances that are accessible to all people.
- The 150 people conference room is multi-functional and will offer the campers a space to be on rainy days without leaving camp. This room has an indoor/outdoor fireplace for the camp atmosphere and outdoor cooking.
- A wrap-around deck offers a scenic overlook to the wetland below, and the front porch is roomy enough for Adirondack rocking chairs with a great view of the rest of camp.

Thank you for choosing to make a difference in the future of recreation for the City of Springfield. Together we are building a barrier-free camp and park that will enable campers to focus on independence, individuality, recreation and fun.

The Springfield Council for Cultural and Community Affairs and Camp STAR Angelina are 501(c)3 organizations, all donations are tax deductible.

Please make donations payable to:

SCCCA/Camp STAR Angelina
200 Trafton Road
Springfield, MA 01108

For more information contact:

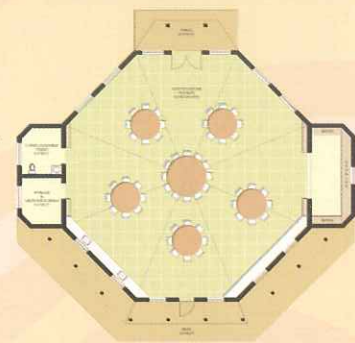
Laura Walsh
Tel. (413) 886-5186
Fax (413) 787-6439
lwalsh@springfieldcityhall.com

Visit us at:
www.springfieldcityhall.com/Park

Activity Center - Phase 3



- This Imagination Center is an octagonal building with a three-sided deck overlooking Porter Lake.
- Enhanced by natural lighting, the open floor plan encourages movement and a non-restrictive environment designed to stimulate the creativity of the campers. Campers' creations will be showcased on the display wall, and an arched entrance leads to a benched window seat room for quieter play and imaginative games. The possibilities for discovery are endless.
- The Activity Center accommodates up to 50 people year round, providing indoor and outdoor programming space with access to a climate-controlled environment.



Amphitheater - Phase 3

- Every camp needs a stage to ensure that the campers have a chance to take center stage and experience the benefits of the positive spotlight. Our amphitheater offers accessibility in all seats and on each level, accommodating up to 250 people.
- Perfect for the end-of-the-summer variety show! The campers will be able to put on performances in a state-of-the-art outdoor theater, while parents and families will be able to see them shine where they are most comfortable and successful – Camp STAR Angelina.



Discover • Universal • Play

"Never doubt that a small group of thoughtful, committed citizens can change the world. Indeed, it is the only thing that ever has."

Margaret Mead

200 Trafton Road
Springfield, MA 01108
www.cityofspringfield.com/Parks

"Go out and be your best"
– Eunice Shriver

